



## ROCHESTER 19 - Metro

 4
  2.5
  2
 House size: 183sqm

A home that offers innovative design creating truly harmonious living for the whole family, perfect for those who love to entertain. Featuring zoned living spaces, spacious bedrooms, a double garage, great storage, and a study area - ideal for the kids to do homework or getting work done. Plus, the home theatre is a great space for movie nights with friends or family. The master suite is the ultimate sanctuary with a parents retreat, walk-in robe, and ensuite. And don't forget the outdoor alfresco - for hosting parties or gatherings with friends and family.

### Inclusions:

- Upstyle promotion included for free
- Free ducted air-conditioning
- 20mm stone kitchen benchtops
- 2590 ceiling height to ground floor
- 900mm stove & oven
- Chainless vertical blinds & flyscreen's to windows
- Colour concrete driveway
- Fixed site costs included
- Tiled alfresco
- Carpet to bedrooms and tiles to living areas
- Land is due to be registered early 2025

For further information please call Canvas Sales Team on 0455431432 or visit our Sales Display at Liverpool Westfield – Level 2, Shop 2091



**Brolen Homes**

**SOLD**  
**\$1,042,610\***  
**Land \$637,050\***  
**House \$405,560\***

Lot 37, Bishop  
 Crescent,  
 Bonnyrigg 2177

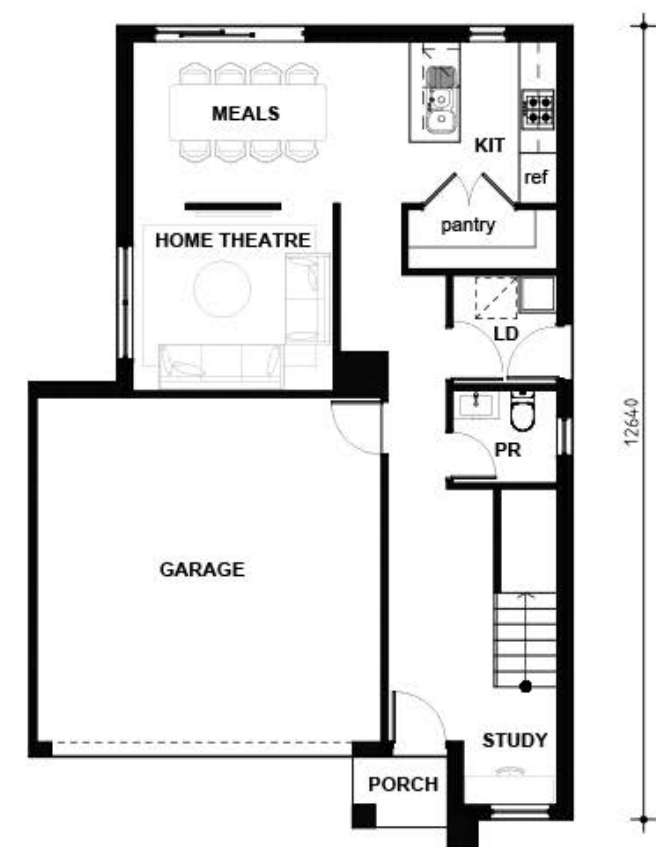
Lot size: 373.4sqm  
 Aspect: North West

\*Disclaimer: Images and artist impressions, indicative only and subject to change. House & Land package pricing and availability are subject to change without notice. House and Land package pricing and availability is based on a specific house and land combination. The price is based on the relevant builder's standard specifications and inclusions for the house as provided to us by the builder. Land package pricing is indicative only and the housing cost component is subject to final tender by the builder. House and land are sold separately under separate contracts. Traders In Purple is responsible for the sale of the land only. Purchasers should confirm all dimensions, plans, specifications, inclusions and pricing with Traders and the builder prior to contract.

Lot 37 - Rochester 19

House size: 183sqm

Lot size: 373.4sqm



**GROUND FLOOR PLAN**



**FIRST FLOOR PLAN**