



## Moonstone MK2

 **4**
 **2**
 **2**
**House size: 187sqm**

Purposefully designed for blocks with a minimum 12.5m frontage, with the Moonstone you gain everything and miss out on nothing. Indulge in openplan living and modern-day luxuries with the Moonstone design boasting a two-car garage, a walk-in pantry, and a master suite, furnished with an ensuite and walk-in wardrobe.

### Inclusions:

- FIXED SITE COSTS
- BASIX
- Actron single phase ducted air-conditioning unit
- Plain concrete driveway up to 30m2 – excludes footpath
- Designer Sink Mixer
- Finger pull cabinetry to overhead cupboards
- 2400mm high overhead kitchen wall cabinetry
- Soft close drawers and doors
- Creative Collection Range - 20mm Stone to Kitchen
- Plumbed cold water point to fridge space
- 900mm - SS - Gas Cooktop
- 900mm - SS - Built-In Electric Oven Model
- 900mm - SS - Slide Out Rangehood - Recirculating
- Dishwasher
- Designer Square Double Bowl Lay-on Sink

For further information please call Canvas Sales Team on 0455431432 or visit our Sales Display at Liverpool Westfield – Level 2, Shop 2091



**\$1,058,300\***  
**Land \$659,600\***  
**House \$398,700\***

Lot 40,  
 Bishop Crescent,  
 Bonnyrigg 2177

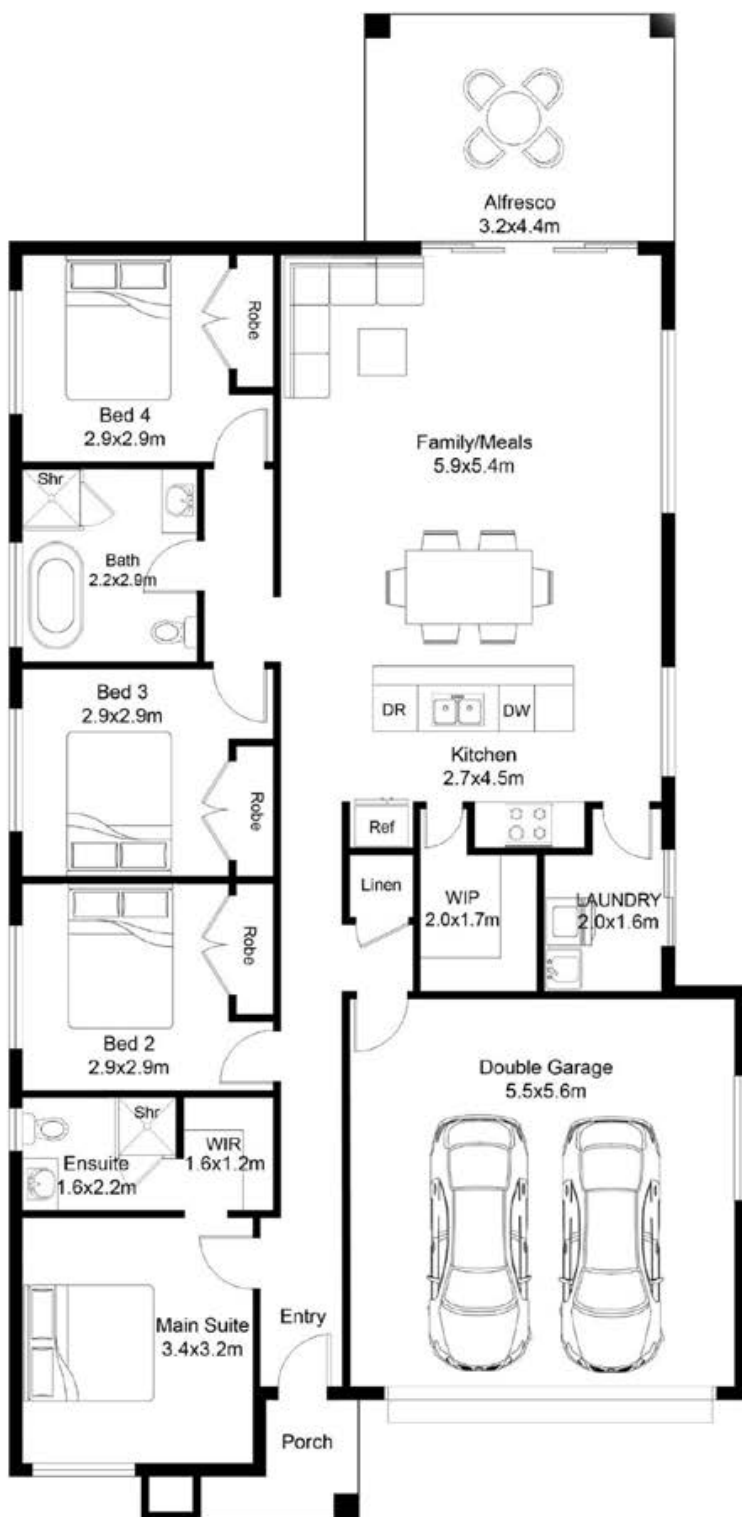
Lot size: 400sqm  
 Aspect: North

\*Disclaimer: Images and artist impressions, indicative only and subject to change. House & Land package pricing and availability are subject to change without notice. House and Land package pricing and availability is based on a specific house and land combination. The price is based on the relevant builder's standard specifications and inclusions for the house as provided to us by the builder. Land package pricing is indicative only and the housing cost component is subject to final tender by the builder. House and land are sold separately under separate contracts. Traders In Purple is responsible for the sale of the land only. Purchasers should confirm all dimensions, plans, specifications, inclusions and pricing with Traders and the builder prior to contract.

Lot 40 - Moonstone MK2

House size: 187sqm

Lot size: 400sqm



\*Disclaimer: Images and artist impressions, indicative only and subject to change. House & Land package pricing and availability are subject to change without notice. House and Land package pricing and availability is based on a specific house and land combination. The price is based on the relevant builder's standard specifications and inclusions for the house as provided to us by the builder. Land package pricing is indicative only and the housing cost component is subject to final tender by the builder. House and land are sold separately under separate contracts. Traders In Purple is responsible for the sale of the land only. Purchasers should confirm all dimensions, plans, specifications, inclusions and pricing with Traders and the builder prior to contract.